

SPECIAL
POINTS OF
INTEREST:

- Union Volleyball off to a good start.
- Union blows past Lambuth
- Union beats MMC
- Union beats Bethel
- Upcoming matches

INSIDE THIS
ISSUE:

- Union starting the season well 1
- Union blows past Lambuth 1
- Union beats MMC 2
- Union edges past Bethel 2-3
- Union Volleyball Schedule 4

UNION

VOLLEYBALL

VOLUME 1, ISSUE 2

SEPTEMBER 14, 2008

Union Volleyball off to a good start

Union University Volleyball team is off to a good start with them being 7-2 overall and 3-0 in the conference. The team started off with a win against Mid-Continent winning 3-0, next was Bryan College out of Dayton, TN (who finished one game from making nationals last year) whom the Lady Bulldogs was serving for the win 3 times only to fall 3-2. The Lady Bulldogs then went to the College of the Ozarks

Tournament. They finished 3-1 in the tournament—winning 3-0 against Bethany College, 3-1



The 2008 Union University
Volleyball Team

against William Woods College, losing 3-1 in a

closely played match to College of the Ozarks (who is #30 in the NAIA national rankings), and won 3-0 over Tabor College. This brought the lady bulldogs to this week where they played cross town rival Lambuth University, Martin Methodist, and Bethel College. This moved Union to second in the conference rankings and ranked 43 rd in the nation.

Union blows past Lambuth

By Matt Vines of the Jackson Sun

The Union University offense overpowered Lambuth in a 3-0 rout of the Lady Eagles. The Lady Bulldogs made few receiving errors at up opportunities for its hitters, sweeping the Lady Eagles 25-21, 25-19, 25-16.

“This was not one of our best matches of the season, but part of that is Lambuth knows us well.” said Union coach Steven Gream. “Passing was the key for us.”

Freshman Anna Sims led the attack with 10 kills, followed by Amanda Hutchison Coyle with 8 kills, and Emilie Ogas and Heather Lieberman with 7 kills. CJ Neathamer led the defense with 30 digs and 6 aces, and Setter Katie Adams had 30 assists and 10 digs. Union, as a team, displayed their mighty offense with 37 kills, 40% hitting percentage, and had 11 aces.



Lindsey Wallach making a great dive for a tipped ball.



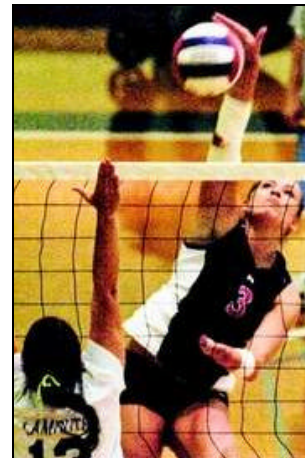
Emilie Ogas and Anna Sims go up for a block against Bethel's Jessica Vieira.

Photo courtesy of Katie Morgan

Union defeats Martin Methodist

For the 3 + years that Coach Steven Gream has coached at Union, Martin Methodist College has been a team that Union just could not get a win against. That changed on Thursday with a 3-0 win

over Martin Methodist College. The Union Lady Bulldogs jumped on top of the Lady RedHawks from the first serve and never looked back winning in 3 sets with the scores of 25-8, 25-18, 25-12.



Heather Lieberman Spikes over a Lambuth Player. Photo by Katie Morgan

Union Edges Bethel

By Brandon Shields—
Jackson Sun

Before Bethel and Union played their volleyball match in Jackson on Saturday afternoon, Lady Bulldogs coach Steven Gream told his players they were not facing a Bethel team similar to what they were used to.

“Bethel had a couple of years where they were not as good as other teams around here,” Gream said. “But that’s not the case anymore.” “Bethel is truly a legit team in the Transouth Conference, and I knew they were going to be

tough coming in.”

Bethel was tough, but the Lady Wildcats were not tough enough as Union took the match in four sets 25-13, 25-16, 23-25, 25-16.

Bethel came into the match unbeaten, including a win over Trevecca Nazarene University the night before. But the Bethel team got off to a slow start and Union took advantage.

Union scored the first 10 points of the opening set and rode the early advantage to a 12 point win. The same was the case in set two. Set three the Lady

Wildcats put up a stronger fight and won the 3rd set in a close set winning 25-23.

“One thing that Bethel has really improved on this year is placing the ball, and it worked really well for them in the set that we lost,” Gream said. “ We’ve got to give them credit for how well they were getting the ball in places we weren’t.”

Continued on page 3

Union Edges Bethel Continued....

The Lady Bulldogs took the 3rd set loss as motivation in the 4th set as they jumped out to another quick lead and were up 16-5 early on.

Bethel tried to mount a comeback, but Union did not let up as it picked up the nine-point win to end the match and Bethel's unbeaten streak.

We're played better right now than we were early on, and our defense is definitely better," Gream said. "We came in ready to play today, and the girls gave it a lot of effort."

Union's Offense was led by Heather Lieberman with 12 kills, Anna Sims with 10 kills, Amanda Huthison Coyle and Emilie Ogas had 9 kills, and Ashley Young had 7 kills. CJ Neathamer had 27 digs, Heather Lieberman had 15 digs, and Katie Adams and Lindsey Wallach each had 13 digs. Katie Adams finished with 40 assists as well. Union's defense held Bethel's offense to a .039 hitting percentage, 34 kills, and only one ace.



**Union Volleyball 08—
Horseback riding in
pre-season.**

How to stay informed about Union Volleyball

Union Volleyball wants to keep its fans, boosters, parents, and alumni informed of what is happening throughout our season. Here are some ways to stay informed.

1. Sign up for our Newsletter, which will be sent to you via e-mail every two weeks. We need your name and e-mail address to do this. You can e-mail Coach Gream at sgream@uu.edu to request a newsletter, like this, be sent to you.
2. If you have Facebook or Myspace... you can join our group called Union University Volleyball Players and Fans. This will keep you informed and also details about upcoming matches.
3. uuvballparents group on Yahoo groups. All you have to do is sign up for a yahoo account and then find the group and join.

Thank you for your support and we look forward to seeing you at our matches both at home and away.

Steven Gream



Ashley Young hits the ball past Jessica Vieira in a 3-1 win over Bethel College.

Photo courtesy of Katie Morgan

Upcoming Matches

Opponent	Place	Date	Time	Conference
Lyon College	Home	9/19	6pm	Yes
Freed Hardeman	Away	9/23	7pm	Yes
Cumberland Tourney	Away	9/26-27	3-7, 9-1	No
Trevecca	Home	9/30	7pm	Yes
Bethel College	Away	10/2	7pm	Yes
Lyon College	Away	10/4	12pm	Yes
Cumberland Univ.	Away	10/7	6pm	Yes

